

# nutribullet®

## FLIP



# User guide.



**WARNING!** To reduce the risk of serious injury, read the User Guide before operating your nutribullet® Flip Insulated Portable Blender. Save these instructions. Be sure anyone who uses the nutribullet® knows how to do so safely.

# Important safeguards.

When operating your nutribullet® Flip Insulated Portable Blender, remember: **SAFETY COMES FIRST.**

**WARNING!** To avoid the risk of serious injury, death, property damage, or damage to your device, carefully read all instructions before operating your nutribullet® Flip Insulated Portable Blender. When using any electrical appliance, basic safety precautions should always be observed, including the following important information. READ CAREFULLY AND THOROUGHLY BEFORE OPERATING.

If you let anyone else use your nutribullet® Flip Insulated Portable Blender, make sure that they understand the health and safety information in this User Guide, as well as any additional safety or usage instructions provided. Each person using a device should read the User Guide completely, and become familiar with the safe operation of the unit.

## ! Save these instructions! • FOR HOUSEHOLD USE ONLY

READ ALL INSTRUCTIONS CAREFULLY AND THOROUGHLY BEFORE OPERATING.

### HEAT AND PRESSURE SAFETY:

**! WARNING! DO NOT BLEND HOT, WARM, CARBONATED, OR EFFERVESCENT INGREDIENTS.**

Such use may pressurize the Cup during blending, potentially causing the Lid to open forcefully, or the Cup and Hybrid Motor Base, Blade, and Lid to separate from the Cup. This could expel hot ingredients and cause exposure to the blade, potentially resulting in bodily injury and/or property damage.

Only blend room-temperature or refrigerated ingredients (70°F/21°C or cooler).

Carbonated and effervescent ingredients (e.g., soda, baking powder, baking soda, yeast, some batters, cake mix, dry ice, or other things that become bubbly) release gasses that increase pressure within the Cup when blending. Some protein powders also include effervescent

ingredients. Always check your ingredients before blending.

**! WARNING! DO NOT BLEND CONTENTS FOR MORE THAN ONE MINUTE. DO NOT RUN CONSECUTIVE BLENDING CYCLES THAT EXCEED ONE MINUTE TOTAL.**

The friction created by the blending process builds heat inside the Cup. Blending continuously for more than one minute increases this risk of pressurization. Consecutive blending cycles that exceed one minute total may over-pressurize the Cup, causing the Lid to open forcefully, or the Cup and Hybrid Motor Base, Blade, and Lid to separate from the Cup. This could expel hot ingredients and cause exposure to the blade, potentially resulting in bodily injury and/or property damage.

**! WARNING! DO NOT LEAVE BLENDED FOODS IN A SEALED CUP FOR PROLONGED PERIODS OF TIME.**

If left inside a sealed Cup, a blended mixture may spoil and ferment. During fermentation, the mixture may release gases that build pressure inside the Cup. Over-pressurization may cause the Lid to open forcefully, or the Cup and Hybrid Motor Base, Blade, and Lid to separate from the Cup. This could cause exposure to the blade, potentially resulting in serious bodily injury, property damage, or damage to your unit. Do not leave blended ingredients in the sealed Cup for a prolonged period of time.

To release pressure in the Cup, open the Lid to the drinking spout pointing away from your face and body. Always exercise caution, being mindful of escaping steam, gases, or foodstuffs that may splatter or spray out.

### CUP CAUTION:

- Always use caution when opening the Lid. Open the Lid slowly with the opening pointed away from your face and body, being mindful of any splattering that may occur.

### CUP SAFETY:

Proper Cup use is important for the safe operation your nutribullet® Flip Insulated Portable Blender. Using the Cup inconsistent with these instructions may result in bodily injury, property damage, or damage to your unit.

- **ALWAYS** ensure the Cup is securely tightened and locked onto the Hybrid Motor Base, Blade, and Lid before blending. The motor will not turn on unless the Cup is situated in the locked position.
- **ONLY** operate the unit with the Lid cover snapped in place.
- Never operate your nutribullet® Flip Insulated Portable Blender while the Cup is empty.
- **DO NOT** exceed the MAX line. Exceeding the MAX line can jam the blade or cause leakage.

- **NEVER** remove the Cup or open the Lid while the unit is in operation.
- **DO NOT** overfill the Cup with ice, as this may impede blade rotation, which can result in damage to the unit or injury. Always be sure to add a sufficient amount of liquid to the Cup before blending.
- Only use genuine nutribullet® parts. Order replacement parts from **nutribullet.com** or by contacting Customer Service.

### BLADE SAFETY:

**! WARNING! BLADES ARE SHARP! HANDLE WITH CARE TO AVOID BODILY INJURY.**

- Do not touch the sharp edges of the blades.
- Do not place hands or fingers near the blades when attaching the Cup to the Hybrid Motor Base, Blade, and Lid.
- Handle with care when washing the blade by hand.
- Always ensure the power is off and the charger is unplugged when assembling, disassembling, or cleaning the blade or Hybrid Motor Base, Blade, and Lid.
- Do not store the Hybrid Motor Base, Blade, and Lid with the blades exposed. Always cover the blade with either the Cup or Blade Cover.
- Do not open the Lid or remove the Hybrid Motor Base, Blade, and Lid from the Cup until the blades have come to a complete stop. Blades can still activate when the Hybrid Motor Base, Blade, and Lid is opened.
- **DO NOT** insert finger or any object in the sip/straw hole while the motor is activated and the blades are spinning. Failure to follow these precautions may result in bodily injury, property damage, or damage to your unit.

## BLADE CARE CAUTION:

### **WARNING! DISCONTINUE USE IF THE BLADE IS BENT OR DAMAGED.**

- Routinely inspect the blades for damage, and if detected, contact Customer Service for blade removal and replacement.
- Remove all utensils and non-food items from Cup before operating to prevent bodily injury, or damage to the blade or Cup.
- Do not blend stone fruit in this appliance unless pits/seeds have been removed. Hard ingredients may damage the blade.
- The blades may stop turning if the Cup is overfilled or if there is an insufficient amount of liquid in the Cup. If this occurs, please refer to the Errors section in this User Guide.

## SURROUNDING SAFETY:

### **WARNING! DO NOT USE YOUR NUTRIBULLET® FLIP INSULATED PORTABLE BLENDER WHILE DRIVING, OPERATING MACHINERY, CYCLING, WALKING, OR ENGAGING IN OTHER ACTIVITIES THAT REQUIRE YOUR UNDIVIDED ATTENTION.**

- Do not expose your nutribullet® Flip Insulated Portable Blender to extreme temperatures or leave in the freezer or refrigerator, as this can damage the batteries, seals, and other components.
- Do not place your nutribullet® Flip Insulated Portable Blender on uneven or unstable surfaces.
- Do not dry your device with a hair dryer, clothes dryer, conventional oven, or microwave oven. If your device becomes wet, gently wipe the exterior with a clean, dry cloth.
- Do not use your device near water or in wet, rainy, or snowy conditions.

- Do not use your device near an open flame or other heat source; near areas of excessive dirt, dust, oil, or chemicals; or in direct sunlight.
- Do not leave your nutribullet® Flip Insulated Portable Blender inside your vehicle, especially in the summer or winter. Prolonged exposure to extreme temperatures can cause the batteries to leak, rupture, or explode.


## GENERAL USE AND SAFETY:

### **WARNING! FAILURE TO FOLLOW ALL INSTRUCTIONS REGARDING YOUR NUTRIBULLET® FLIP INSULATED PORTABLE BLENDER MAY RESULT IN PROPERTY DAMAGE, SERIOUS PERSONAL INJURY, OR DEATH.**

- This appliance is not intended for use by persons (including children) with reduced physical, sensory, or mental capabilities; or lack of experience and knowledge, unless they are closely supervised and instructed concerning the use of the appliance by a person responsible for their safety. Close supervision is necessary when any appliance is used by or near children. Children should be supervised to ensure they do not play with the appliance.
- Periodically inspect your nutribullet® Flip Insulated Portable Blender components for damage or wear that may impair proper functioning or create a safety hazard.
- Be aware of possible hazards when charging, using, or storing your nutribullet® Flip Insulated Portable Blender.
- Do not use this blender for anything other than its intended use.
- Avoid contact with moving parts. Do not attempt to defeat any safety interlock mechanisms.
- Do not insert anything other than the appropriate charger into the USB-C port. Do not allow dust to accumulate inside the port.


- Do not crush, drop, or damage the Hybrid Motor Base, Blade, and Lid. Do not operate if this component is damaged in any manner. Contact Customer Service for assistance at **1 (800) 523-5993**.
- Use only nutribullet® attachments/accessories specifically designed for your nutribullet® Flip Insulated Portable Blender. Always use genuine nutribullet® replacement parts and accessories. Aftermarket parts are not made to nutribullet® specifications and may damage your unit or cause serious injury.
- The manufacturer does not recommend the use of attachments, including canning jars, with the nutribullet® Flip Insulated Portable Blender. Attempting to use attachments not included with the product's configuration may result in injury to persons.
- Do not attempt to clean the Hybrid Motor Base, Blade, and Lid by immersing it in water or other cleaning liquids. Follow the instructions in the Care & Maintenance section on page 20.
- Only the Cup and plastic accessories of the nutribullet® Flip Insulated Portable Blender are dishwasher-safe. If you choose to clean these in the dishwasher, only place them on the top rack of the dishwasher and do not run the heat or sanitizing cycle. **NEVER PLACE THE HYBRID MOTOR BASE, BLADE, AND LID IN THE DISHWASHER.**

## ELECTRIC SAFETY:

-  **WARNING! MODIFICATION, IMPROPER USE, AND FAILURE TO FOLLOW INSTRUCTIONS CAN INCREASE THE RISK OF PROPERTY DAMAGE, SERIOUS PERSONAL INJURY, OR DEATH.**
- **Only use the Charging Cable and Charging Block that came with your unit.**

- **Do not charge this appliance with any other charger or attempt to use the Charging Block on any other product.**
- **NEVER USE UNAPPROVED POWER SOURCES OR RAPID CHARGERS.**
- To avoid the risk of electrical shock, fire, or bodily injury, **DO NOT** charge or use in wet conditions, or immerse the Charging Cable, Charging Block, or Hybrid Motor Base, Blade, and Lid in water or other liquids.
- Do not operate the unit if there is damage to the Charging Cable or Charging Block, if there has been an appliance malfunction, or if the Hybrid Motor Base, Blade, and Lid has been dropped or damaged in any manner. Contact Customer Service for assistance at **1 (800) 523-5993**.
- Always **POWER OFF** and **UNPLUG** the nutribullet® Flip Insulated Portable Blender when not in use, and **BEFORE** assembling, disassembling, changing accessories, or cleaning.
- Do not charge your device around flammable materials, on your bed or couch, or on top of any type of paper.
- Only charge your device with the Charging Cable and Charging Block provided. Using incompatible parts or aftermarket accessories may damage your nutribullet® Flip Insulated Portable Blender or create safety hazards that may cause personal injury or property damage.

## POWER SUPPLY SAFETY:

-  **WARNING! USE ONLY THE CHARGING CABLE AND CHARGING BLOCK PROVIDED WITH YOUR NUTRIBULLET® FLIP INSULATED PORTABLE BLENDER. NEVER USE AN UNAPPROVED POWER SOURCE OR RAPID CHARGER ON THIS UNIT.**

**⚠ WARNING! FAILURE TO TAKE THE FOLLOWING PRECAUTIONS CAN RESULT IN SERIOUS PERSONAL INJURY, DEATH FROM ELECTRIC SHOCK OR FIRE, OR DAMAGE TO YOUR DEVICE.**

**⚠ WARNING! DO NOT USE THE CHARGING BLOCK WITH A VOLTAGE CONVERTER DEVICE, ADAPTER, OR EXTENSION CORD.**

- Do not use non-standard power sources, such as generators or inverters. Use only AC power provided by a standard wall outlet or automobile lighter port.
- Do not use a rapid charger or higher-wattage charger. Use only with a standard wall outlet or automobile lighter port. Never start your car with the unit plugged into the automobile lighter port, as this can potentially cause a power surge that will short out the unit.
- Do not overload your wall outlet. Confirm that it is rated to handle the total current (in amps) drawn by your device (as indicated on your Power Supply Unit) and any other devices using the same circuit.
- Never use a damaged Charging Block, or one that has been dropped or received a sharp impact.
- Do not charge in an area of extreme heat or cold.
- Always unplug the Charging Block when not in use.

#### **CABLE AND CORD SAFETY:**

**⚠ WARNING! USE ONLY THE CHARGING CABLE THAT CAME WITH YOUR NUTRIBULLET® FLIP INSULATED PORTABLE BLENDER TO CHARGE.**

- Inspect your Charging Block and cables regularly.
- Exposed device cables and cords pose a potential tripping hazard. Arrange all cables and cords so that

people and pets are not likely to trip over or accidentally pull on them as they move around or walk through the area.

- Do not wrap or wind the Charging Cable too tightly when storing. Do not bend or crease the Charging Cable when using.
- When positioning your device or Charging Block, ensure that the cables are not bent sharply and that the connectors are not pushed against a wall or hard surface.
- Do not allow pets or children to bite or chew on cables and cords.
- Always disconnect the Charging Block from the outlet by pulling on the plug portion of the block. Never pull on the Charging Cable to remove the Charging Block from the wall.
- Do not let the Charging Cable touch hot surfaces or any extreme heat source, or become knotted, tangled, or frayed.
- Do not grab or carry your device by the Charging Cable.
- Do not use an extension cord or let the Charging Cable hang over the edge of a table or counter.

#### **BATTERY SAFETY:**

Your nutribullet® Flip Insulated Portable Blender contains rechargeable lithium-ion batteries. The batteries are not replaceable and must be recycled or disposed of properly. Improper disposal may result in injury, death, or property damage due to battery fluid leakage, fire, overheating, or explosion.

- **DO NOT** open or attempt to repair or replace the batteries, doing so may result in electric shock, damage to the unit, fire, personal injury, or property damage.
- Do not recharge your nutribullet® Flip Insulated Portable Blender near a fire or heat source, or in extremely hot conditions.

- Do not expose the Hybrid Motor Base, Blade, and Lid containing the battery pack to fire or excessive heat. Exposure to fire or temperatures above 265°F/130°C may damage the batteries or cause a fire or explosion.
- The recommended storage and ambient charging temperature range for this device is between 50°F–104°F (10°C–40°C).
- **NEVER** leave your nutribullet® Flip Insulated Portable Blender inside your vehicle, especially in the summer or winter. Prolonged exposure to extreme temperatures can cause the batteries to leak, rupture, or explode.
- Do not store your unit in any area with exposure to excessive heat, such as a cabinet above the oven or stove, near a radiator or heater, or in any area exposed to direct sunlight.
- Do not use your unit in any area with a potentially explosive atmosphere (e.g., fueling areas or fuel service stations, below decks on boats or other vessels, fuel and/or chemical transfer and storage facilities, and areas where flammable chemicals or particles, such as grain dust or metal powders have collected in the air). Static electricity discharge may ignite combustible or flammable materials resulting in a fire or explosion.
- Do not use your unit if the Hybrid Motor Base, Blade, and Lid is overheated, has an odor, leaks, is bulging, or demonstrates any changes in color/shape, as this may indicate a leak from the battery cell. Leaks from battery cells can occur under extreme conditions. Battery fluid is corrosive and may be toxic. It can cause burns and may be harmful or fatal if swallowed. If any signs of leakage occur, immediately discontinue all use of the unit and contact Customer Service for assistance at **1 (800) 523-5993**.
- Avoid contact with battery fluid. If a battery leaks, keep the leaked fluid from touching your skin, eyes, clothes, or other surfaces. If the battery fluid contacts your skin, eyes, or clothes, immediately rinse the affected area with water and contact your doctor or other medical providers as appropriate.
- Dispose of batteries properly. The batteries contain elements that may pose health risks to individuals if they are allowed to leach into the ground water supply. Disposal of these batteries with standard household waste may be illegal in some countries. Contact your local recycling or hazardous waste disposal centers in your area for proper disposal instructions.
- Do not incinerate the Hybrid Motor Base, Blade, and Lid. The batteries can explode.

# ! Save these instructions!

# Contents.

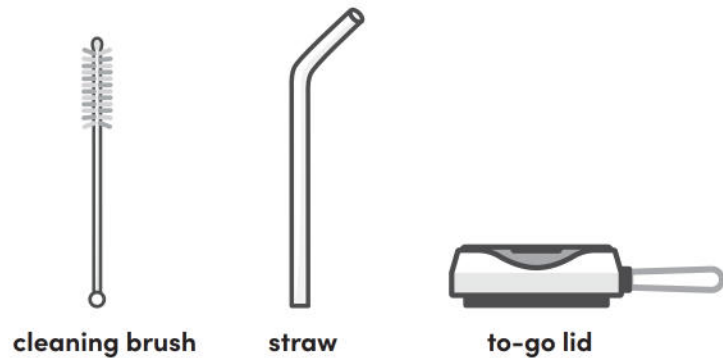
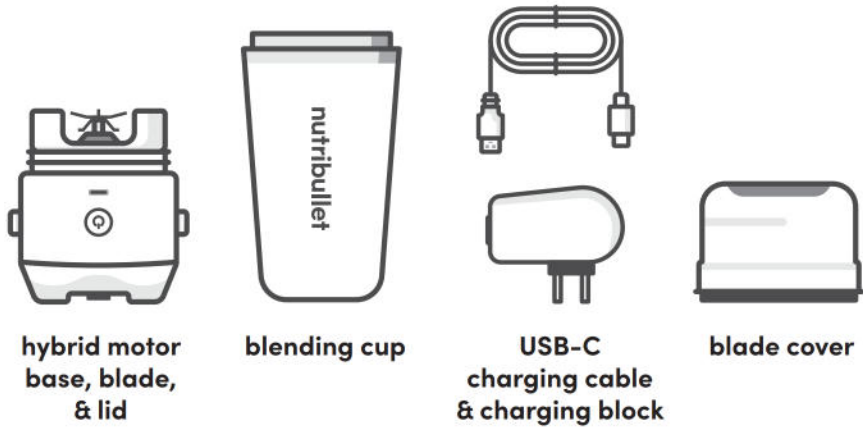


- 1 Important safeguards**
- 9 What's included**
- 9 Before first use**
- 10 Assembly guide**
- 11 LED indicators**
- 13 Using your nutribullet® Flip Insulated Portable Blender**
- 16 Using the To-Go Lid**
- 18 Troubleshooting**
- 20 Care & maintenance**
  - 22 Replacement parts**
- 23 nutribullet® Flip Insulated Portable Blender One-Year Limited Warranty**
- 26 Product registration**

Thank you for purchasing the nutribullet® Flip Insulated Portable Blender.



# What's included.

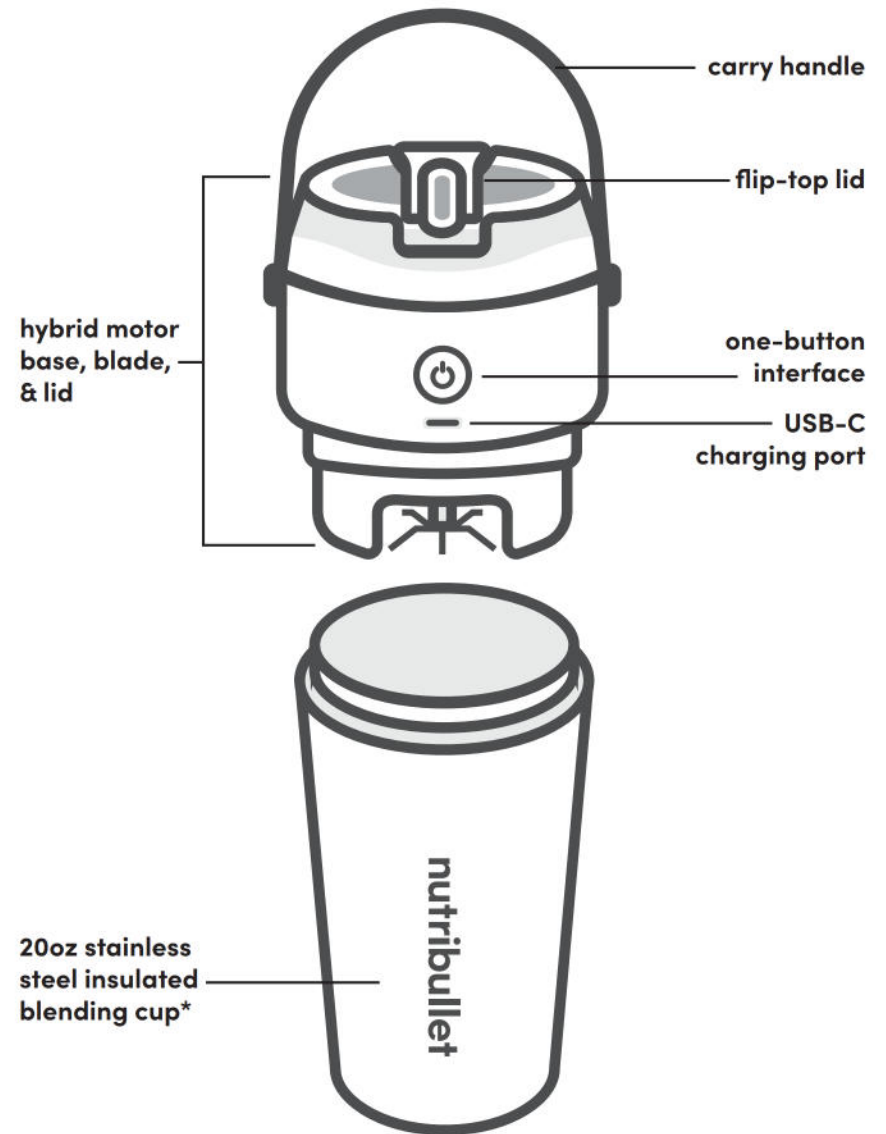


# Before first use.

Remove all packaging materials, stickers, and the like, and clean your unit with care according to the instructions detailed in the Care & Maintenance section (pg. 20).

Charge the unit for at least 2 hours using the provided USB-C Charging Cable and Charging Block.

# Assembly guide.



**⚠️ WARNING! DO NOT** exceed the MAX fill capacity. 20oz total Cup capacity. 16oz MAX fill line capacity.

# LED indicators.

The nutribullet® Flip Portable Blender's indicator has six LED light bars that appear white, yellow, red, or green according to the unit's operational status. The meaning of each display is detailed below.

## Charging.



**NO POWER:**  
All LEDs off.

LED light bars



**CHARGE STATUS:**  
When plugged in to charge, the color of LED indicates charge status.

**SOLID GREEN:** full charge.

**FLASHING GREEN:** ready for normal use.

**FLASHING YELLOW:** low charge, can run several cycles.

**FLASHING RED:** needs charging, do not use to blend.



**ERROR:**

Flashing **YELLOW** lights indicate a use error. Refer to the troubleshooting guide on page 19 to diagnose the issue.

Flashing **RED** lights indicate a functional error. If these occur, immediately stop use, power off the blender, and refer to the troubleshooting guide on page 19 for details.

## Settings.



**WAKE:**

Press the **Power** button once to wake up your blender.

The LED ring will illuminate in a clockwise direction. When the ring is fully lit up, the unit is ready to blend.

**WHITE:** ready for normal use.

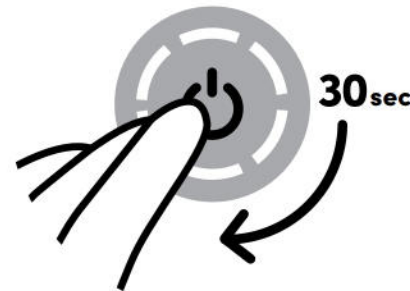
**YELLOW:** low charge, can run several cycles.

**RED:** needs charging, do not use.

**BLEND MODE:**

Press the **Power** button to start a 30-second blend cycle.

White LEDs circulate clockwise during the blending cycle.



**SLEEP MODE:**

After 2 minutes of inactivity, your blender will automatically go into sleep mode.

When the ring light is off, the blender is powered off.

# Using the nutribullet® Flip Insulated Portable Blender.

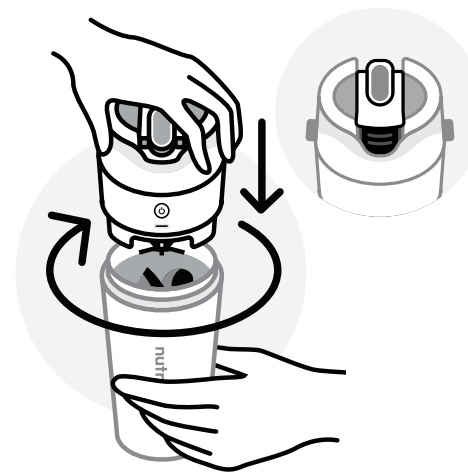


- 1 Place the **Blending Cup** on a clean, dry, and level surface.



- 2 Twist off the **Hybrid Motor Base, Blade, and Lid** and add ingredients.

**NOTE:** Make sure you don't overfill the **Cup**. Follow the minimum liquid and MAX fill marks on the **Cup**. When adding ice, it should not exceed 25% of the **Cup's** total volume. Always add a sufficient amount of liquid ingredients.



- 3 Twist the **Hybrid Motor Base, Blade, and Lid** back onto the **Blending Cup**. Make sure the **Flip-Top Lid** is snapped closed and sealed.



- 5 When ready, press the **Power Button** again to begin a 30-second blending cycle.

**NOTE:** To prevent blade blockage or stalling, start the blending cycle with the blender right-side-up (**Hybrid Motor Base, Blade, and Lid** on top).



- 4 With the blender right side-up (**Hybrid Motor Base, Blade, and Lid** on top), press the **Power Button** once to wake up the blender. Wait about 1 second for the LED light ring to fully illuminate.

**NOTE:** The LED light ring will fully illuminate white if the **Hybrid Motor Base, Blade, and Lid** is properly installed. If the **Hybrid Motor Base, Blade, and Lid** is installed incorrectly, the LED light ring will flash yellow.





- 6** Once blending begins, flip your blender upside-down (**Hybrid Motor Base, Blade, and Lid** on bottom) so the ingredients make contact with the blade. Place the blender on a clean, dry, and level surface until blending is complete.

**NOTE:** If you want to **Pulse** your ingredients or stop the blending cycle early, press the **Power Button** during the blending cycle.



- 7** Once blending is complete, flip your blender so the **Hybrid Motor Base, Blade, and Lid** is right-side-up and open the **Flip-Top Lid** to enjoy your blend.

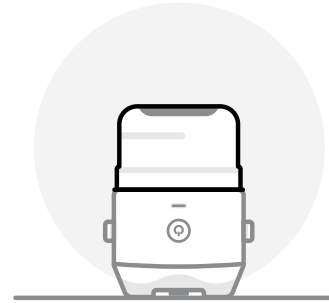


- 8** Use the **Carry Handle** to take your blend on the go.

**!** **WARNING! NEVER** open the **Flip-Top Lid** or attempt to place anything into the sip hole while the motor is running to prevent injury or damage.

## Using the to-go lid.

Your nutribullet® Flip also comes with a twist-on **To-Go Lid** that you can swap with the **Hybrid Motor Base, Blade, and Lid**. The **To-Go Lid** offers two ways to enjoy your blend: through a sipping spout at the front of the **Lid**, or through the straw opening in the center of your **Lid**.



- 1** Remove, clean, and dry the **Hybrid Motor Base, Blade, and Lid**. Cover with the **Blade Cover** before storing.



- 2** Twist on the **To-Go Lid**.



- 3** To open the sipping spout, unsnap the cover flap from the front of the **To-Go Lid**, then flip it all the way over, snapping it into place at the opposite side of the **To-Go Lid**.



- 4** The nutribullet® tab at the center of the **To-Go Lid** covers the straw opening. To reveal the opening, keep the sipping spout cover flap closed and slide the center tab towards the back of the **To-Go Lid**.

**NOTE:** The **To-Go Lid** is not leak-proof and will not prevent blends from seeping or spilling out of the **Cup**. Be sure to always keep your **Cup** upright when using the **To-Go Lid**.

# Troubleshooting.

## ⚠ WARNING!

Before first use, review all warnings and caution statements in the important safeguards section (pages 1-6).

**ALWAYS** use caution when opening the Flip-Top Lid. Open the Flip-Top Lid Cap slowly, being mindful that the spraying of contents may occur.

**NEVER** try to operate your nutribullet® Flip Insulated Portable Blender while driving or while engaging in other situations that require your undivided attention.

**NEVER** use a rapid charger or a higher-wattage charger. Use only the AC power provided.

**NEVER** use the charger with any voltage converter device or adapter.

**ONLY** use the Charging Block and Charging Cable that came with your unit.

**NEVER** start your car with the unit plugged into the automobile lighter port, as this can potentially cause a power surge that will short out the unit.

**DON'T** leave your nutribullet® Flip Insulated Portable Blender unattended when in use.

**DON'T** charge your nutribullet® Flip Insulated Portable Blender if your USB-C charging port is wet.

**NEVER** add hot or warm ingredients to your Blending Cup. Heated ingredients can cause pressure to build inside the Cup potentially causing the Flip-Top Lid to open forcefully, or the Cup and Hybrid Motor Base, Blade, and Lid to separate from the Cup. This could expel hot ingredients and cause exposure to the blade, potentially resulting in bodily injury and/or property damage.

**DO NOT** blend contents for more than one minute. Do not run consecutive blending cycles that exceeds one minute total. The friction created by the blending process builds heat inside the Cup. Consecutive blending cycles that exceed one minute total may over-pressurize the Cup, potentially causing the Flip-Top Lid to open forcefully, or the Cup and Hybrid Motor Base, Blade, and Lid to separate from the Cup. This could expel hot ingredients and cause exposure to the blade, potentially resulting in bodily injury and/or property damage.

Batteries are not replaceable. **NEVER** try to open, repair, or attempt to replace the batteries to your unit.

## FLASHING LED COLOR: YELLOW

### TROUBLESHOOTING:

Blending Cup may not be properly secured to the Hybrid Motor Base, Blade, and Lid.

### SOLUTION:

Continue to tighten the Blending Cup to the Hybrid Motor Base, Blade, and Lid until the LED light ring turns white.

### TROUBLESHOOTING:

Blades may be blocked.

### SOLUTION:

Carefully dislodge any ingredients that are stuck in the blade.

Ensure you are using an adequate amount of liquid, the Cup is not overfilled, and ingredients all fall below the MAX fill line.

To prevent blade blockage or stalling, start the blending cycle with the Hybrid Motor Base, Blade, and Lid right-side-up. (Hybrid Motor Base is on top).

### TROUBLESHOOTING:

The Blending Cup has come loose or been removed from the Hybrid Motor Base, Blade, and Lid during the blending cycle.

### SOLUTION:

Always ensure the Blending Cup is securely fastened to the Hybrid Motor Base, Blade, and Lid before blending. **NEVER** try to remove the Cup from the Hybrid Motor Base before the cycle is complete.

## FLASHING LED COLOR: RED

### TROUBLESHOOTING:

Overheat and automatic lockout.

### SOLUTION:

Immediately discontinue use and allow the blender to cool down. If the blender remains locked after 10 minutes of cooling off, contact Customer Service.

# Care & maintenance.

When cleaning the nutribullet® Flip Insulated Portable Blender, always unplug and power off the unit, making sure the blades are completely stopped before assembling or disassembling.

**!** **WARNING! NEVER** submerge or rinse the entire Hybrid Motor Base, Blade, and Lid in water or any other liquid, and be sure to keep water and other liquids away from the USB-C port.

## Cleaning.

### AUTOMATIC CLEANING:

You may use a blending cycle to quickly clean your blender.

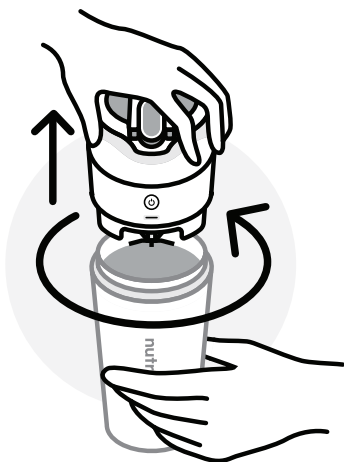


**1** Rinse out the **Blending Cup** with fresh water. Add a drop of dish soap to the **Blending Cup** and fill halfway with water.

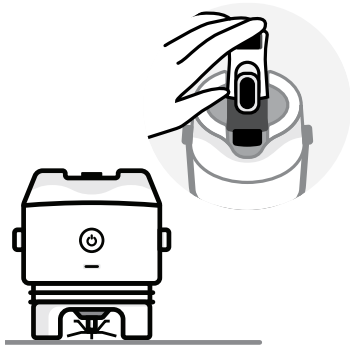
**NOTE:** For stubborn residue, allow the soap and water to sit for a few minutes on each end of the **Blending Cup** before running the cleaning cycle.



**2** Start a blending cycle, and flip and shake the blender to agitate the water during the cycle.



**3** After the cycle ends, open the **Flip-Top Lid** that covers the sip hole and empty the contents. Repeat the cycle once more, using only fresh water for the final rinse. Do not add soap.



**4** Dry the **Hybrid Motor Base, Blade, and Lid** upright with the **Flip-Top Lid** open.

**NOTE:** Make sure and pat the USB-C port dry before you begin charging.

## CLEANING BY HAND:

### HYBRID MOTOR BASE, BLADE, AND LID:

When hand-cleaning, always be mindful not to rinse/submerge the entire **Hybrid Motor Base, Blade, and Lid** in water, and take care to prevent water from entering the USB-C port.

- **Blade:** point downward at an angle and carefully clean and rinse only the blade area of the **Hybrid Motor Base, Blade, and Lid**, keeping your thumb or finger over the USB-C port.
- **Drinking Spout:** with the blade facing up, carefully rinse out the sip hole under a gentle flow of warm water, keeping your thumb or finger over the USB-C port.

Use the included **Cleaning Brush** to help clean the straw, under the blades, sip hole, and vent hole.

To dry, gently wipe and dry the **Hybrid Motor Base, Blade, and Lid** and the USB-C port with a clean cloth. Rest the **Hybrid Motor Base** upright with the **Flip-Top Lid** open. Make sure the USB-C port is completely dry before charging.

**! WARNING! DO NOT** submerge or rinse the entire **Hybrid Motor Base, Blade, and Lid** in water or any other liquid.

### BLENDED CUP:

Wash with soap and water.

### DISHWASHER:

The **Blending Cup** and **To-Go Lid** are the only components of the nutribullet® Flip Insulated Portable Blender that are dishwasher-safe, in the top rack only. To clean the blade and sip hole, follow the Hand Cleaning instructions above.

**! WARNING! DO NOT** place your **Hybrid Motor Base, Blade, and Lid** in the dishwasher.

## Storage.

Always keep your nutribullet® Flip Insulated Portable Blender in a dry, temperature-controlled location. Always store the **Hybrid Motor Base, Blade, and Lid** with the **Cup** or **Blade Cover** attached, so the blades are covered and not exposed. Do not stack any objects on top of the unit while storing.

## For replacement parts.

Visit [nutribullet.com/shop/accessories](https://nutribullet.com/shop/accessories) or call Customer Service at 1 (800) 523-5993.

# nutribullet® Flip Insulated Portable Blender One-Year Limited Warranty.

## LIMITED WARRANTY FOR NUTRIBULLET®

**nutribullet's limited warranty obligations are confined to the terms set forth below:**

nutribullet, LLC (“nutribullet”) warrants this nutribullet® against defects in materials and workmanship for a period of one year from the date of original retail purchase or date of delivery of the product. This limited warranty is valid only in the country in which the product is purchased and comes with the product at no extra charge, however shipping and processing fees will be incurred for returns, replacements, and/or refunds.

If a defect exists, and this limited warranty is valid, at its option, nutribullet® will (1) repair the product at no charge, using new or refurbished replacement parts, (2) exchange the product with a product that is new or that has been manufactured

from new or serviceable used parts, and is at least functionally equivalent to the original product, or (3) refund the purchase price of the product. A replacement product assumes the remaining warranty of the original product. A repaired product has a one-year warranty from the original retail purchase date, or date of delivery of the product. When a product or part is exchanged, any replacement item becomes your property and the replaced item becomes nutribullet's property. When a refund is given, your product becomes nutribullet's property.

## OBTAINING WARRANTY SERVICE

For limited warranty service, simply call our Customer Service department at **1 (800) 523-5993** or contact us via email from our website at **nutribullet.com**. Simply click the contact us link, fill out and submit the Customer Contact

Form and we will be glad to help you. When you contact our Customer Service department, you will be asked for your name, address, telephone number, and proof of original purchase that includes a description of the product(s), purchase date or date of delivery, and the appropriate nutribullet® serial number(s). Before you send your product for limited warranty service, please make sure to keep a copy of all relevant documents for your files (receipt, etc.). It is always recommended to purchase product insurance and tracking services when sending your product out for service. Remember, shipping and processing fees will be incurred and are not covered by the One-Year Limited Warranty.

## EXCLUSIONS & LIMITATIONS

This nutribullet® One-Year Limited Warranty applies only to nutribullet® products distributed by or for nutribullet® that can be identified by the “nutribullet” trademark, trade name, logo and bar code. nutribullet's One-Year Limited Warranty does not apply to any other products that may appear to be authentic, but were not distributed/sold by nutribullet, LLC.

Normal wear and tear is not covered by this limited warranty. This limited warranty applies to consumer use only, and is void when the product is used in a commercial or institutional setting. This limited warranty extends only to the original consumer purchaser and is not transferable. In addition, proof of purchase must be demonstrated.

Repair or replacement of the product (or, if repair or replacement is not feasible, a refund of the purchase price) is the exclusive remedy of the consumer under this limited warranty. nutribullet, LLC shall not be liable for any incidental or consequential damages for breach of this limited warranty or any implied warranty on this product.

This limited warranty gives you specific legal rights. You may also have other rights which vary from state to state. nutribullet® is not liable for any damage to products not covered by this warranty (e.g., cups, book, User Guide).

This limited warranty does not apply: (a) to damage caused by accident, abuse, misuse, or misapplication; (b) to damage caused by improper maintenance (including unauthorized parts service);



(c) to a product or a part that has been modified in any way; (d) if any nutribullet® serial number or trademark has been removed or defaced; and/or (e) if the product has been used with an adapter/converter.

**THIS LIMITED WARRANTY AND THE REMEDIES SET FORTH ABOVE ARE EXCLUSIVE AND IN LIEU OF ALL OTHER WARRANTIES, REMEDIES, AND CONDITIONS, WHETHER ORAL OR WRITTEN, EXPRESSED OR IMPLIED. NUTRIBULLET® SPECIFICALLY DISCLAIMS ANY AND ALL IMPLIED WARRANTIES, INCLUDING, WITHOUT LIMITATION, WARRANTIES OF MERCHANTABILITY AND FITNESS FOR A PARTICULAR PURPOSE. IF NUTRIBULLET® CANNOT LAWFULLY DISCLAIM IMPLIED WARRANTIES UNDER THIS LIMITED WARRANTY, ALL SUCH WARRANTIES, INCLUDING WARRANTIES OF MERCHANTABILITY AND FITNESS FOR A PARTICULAR PURPOSE ARE LIMITED IN DURATION TO THE DURATION OF THIS LIMITED WARRANTY.**

No nutribullet® reseller, agent, or employee is authorized to make any modification to this warranty.

**NUTRIBULLET® IS NOT RESPONSIBLE FOR DIRECT, SPECIAL, INCIDENTAL, OR CONSEQUENTIAL DAMAGES RESULTING FROM ANY BREACH OF WARRANTY**

**OR CONDITION, OR UNDER ANY OTHER LEGAL THEORY, INCLUDING BUT NOT LIMITED TO LOST PROFITS, DOWNTIME, GOODWILL, OR DAMAGE TO REPLACEMENT OF EQUIPMENT AND PROPERTY. NUTRIBULLET® SPECIFICALLY DOES NOT REPRESENT THAT IT WILL BE ABLE TO REPAIR ANY PRODUCT UNDER THIS LIMITED WARRANTY.**

Some states and provinces do not allow the exclusion or limitation of incidental or consequential damages or exclusions or limitations on the duration of implied warranties or conditions, so the above limitations or exclusions may not apply to you. This warranty gives you specific legal rights, and you may also have other rights that vary by state or province.

# Product registration.

Visit [nutribullet.com/register](http://nutribullet.com/register) or call **1 (800) 523-5993** to register your new nutribullet® Flip Insulated Portable Blender. You will be asked to enter the **Serial Number\*** of your product, along with the purchase date and place of purchase. The information you submit is for product registration. Failure to complete product registration does not diminish your warranty rights.

The registration will enable us to contact you in the unlikely event of a product safety notification. By registering your product, you acknowledge that you have read and understood the instructions for use, and warnings set forth in the accompanying instructions.



**\*Locate the serial number under the nutribullet® tab on the Flip-Top Lid of your nutribullet® Flip Insulated Portable Blender. If you cannot find the serial number, call Customer Service for assistance.**



**Capital Brands Distribution, LLC | [nutribullet.com](https://nutribullet.com) | All rights reserved.**

nutribullet® and the nutribullet® logo are trademarks of CapBran Holdings, LLC registered in the U.S.A. and worldwide.

Illustrations may differ from the actual product. We are constantly striving to improve our products, therefore the specifications contained herein are subject to change without notice.

**NBPBxx350\_240411**