

Oils, Honey & Spices



8 DECENT WORK AND ECONOMIC GROWTH



Kirkland Signature Extra Virgin Olive Oil

Costco has a long history of supporting smallholder olive farms. Since 1996, we have directly supported thousands of smallholder farms in Tuscany to make high-quality Kirkland Signature™ Toscano PGI (Protected Geographical Indication) Extra Virgin Olive Oil. More information can be found in this [Tuscan Olive Oil video](#).

PGI signifies that:

- Every grower is registered with the program.
- The number of trees and yields on each property are verified.
- Each bottle is numbered in Tuscany under the strict guidelines of PGI to ensure traceability, authenticity and quality.

Kirkland Signature 100% Italian Extra Virgin Olive Oil, sourced from outside Tuscany, is certified by an independent third-party organization, with each bottle carrying an ISO-certified sticker, providing proof that the oil is authentic and fully traceable to the source. More information can be found in this [Italian Olive Oil video](#).

We continue to expand our certified single origin olive oil offerings from Greece, Italy and Spain. More information can be found in this [Spanish Olive Oil video](#).

8 DECENT WORK AND ECONOMIC GROWTH



Palm Oil

Costco is a member of the Roundtable on Sustainable Palm Oil (RSPO) and is committed to ensuring that the palm oil, palm kernel oil, palm kernel expeller and other palm-based derivatives and fractions (“palm oil”) contained in Kirkland Signature products are responsibly sourced.

15 LIFE ON LAND



Our goal is that all palm oil used in Kirkland Signature products is 100% RSPO certified (or equivalent), with a preference for physical palm. For a product to be RSPO certified, it must come from producers that have met the RSPO Principles and Criteria which cover the most significant environmental and social impacts of palm oil production. These include the immediate inputs to production, such as seed, chemicals and water, as well as social impacts related to on-farm labor and community relations. They also apply to environmental protections, such as no new plantings on peatlands, burning forests and clearing new areas.

According to supplier-reported data, here’s a look at how we have worked with suppliers to meet this goal:

RSPO-Certified Palm Five Year View

Reporting Year ¹	RSPO Certified - Physical Palm Oil ²	RSPO Certified - Book & Claim Palm Oil Credits	RSPO Certified ²
2018	77.6%	4.3%	81.9%
2019	89.3% ³	7.2%	96.4%
2020	96.7%	0.8%	97.5%
2021	98.6%	0.03%	98.6%
2022	99.2%	0.8%	100%
2023	99.8% ⁴	0.2%	100%

(1) Per RSPO reporting requirements, the reporting/calendar year represents that year’s data, which is reported in May of the following year. For example, in May 2024, we reported 2023 calendar year data.

(2) "Physical Palm Oil", which is our preference, comes from supply chains that are Identity Preserved, Segregated or Mass Balance, whereas "RSPO Certified" may include the Book and Claim System.

(3) Restated to reflect data correction.

(4) 9.2% of our “Physical Palm Oil” was segregated or identity preserved.

More information can be found in our [Palm Oil Policy](#), the Annual Communication of Progress (ACOP) 2023 Report filed with [RSPO](#) and on the “Nature & Biodiversity” page of the [Merchandising section](#).



Kirkland Signature Soy-Based Oils

Costco understands that soy is a major driver of tropical deforestation in countries such as Brazil. For that reason and others, we source Kirkland Signature Soybean Oil, Kirkland Signature soy beverages and Kirkland Signature Vegetable Oil made from soybean oil from the U.S. and Canada.



Kirkland Signature Honey

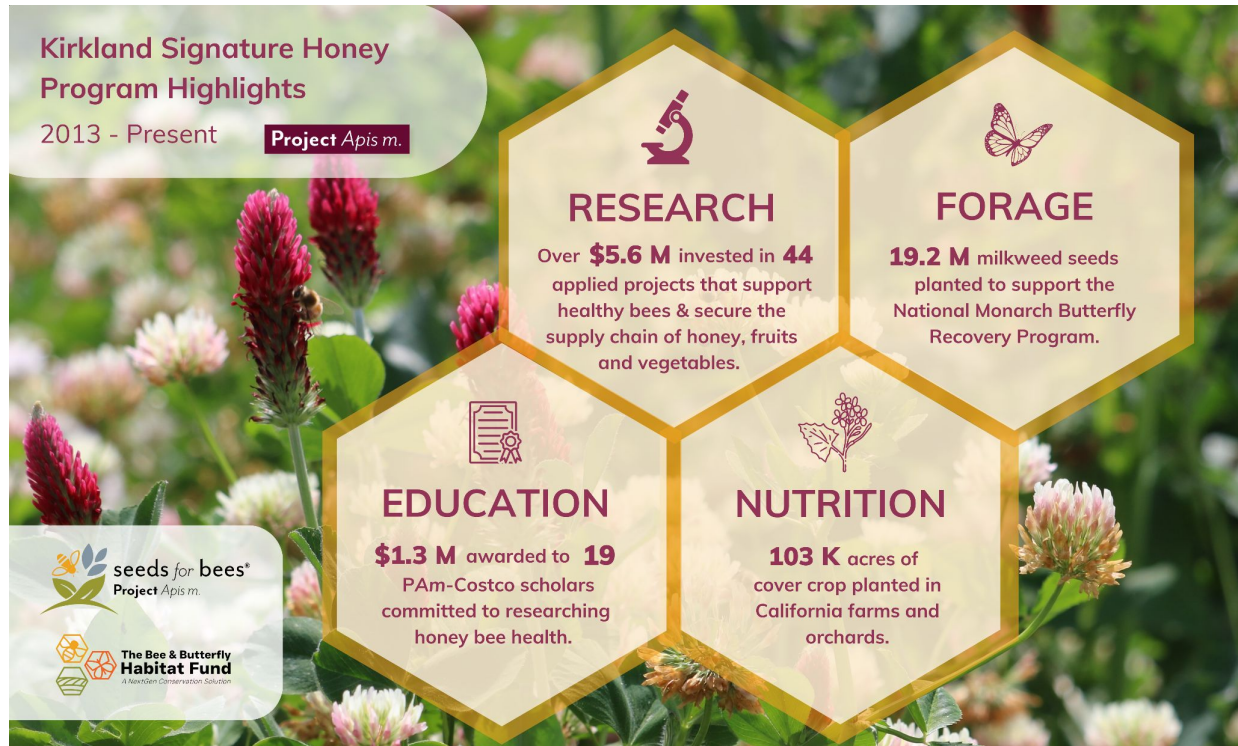
The honeybee population is facing multiple health threats. Honeybees are necessary for pollinating approximately one-third of food consumed, including fruit, nuts and vegetables. Since 2012, we have contributed a portion of the sales of Kirkland Signature Honey items to the nonprofit honeybee research organization [Project Apis m.](#) (PAm). The projects that Costco supports continue to expand. Here are some examples of the work we do:

- Long-term stock improvement efforts involve developing varroa-resistant bees (such as Hilo bees) for sustainable, chemical-free varroa control options and maintaining a sustainable genetic repository for honeybee germplasm to safeguard honeybee's genetic integrity and diversity against future health threats. Hilo bees had 37% more rentable colonies for pollination compared with control colonies. More information can be found here, [The Hilo Bee Project](#) and [Varroa Resistant Bee video](#).

- Apiculture Technology Transfer Teams give U.S. beekeepers technical support in the field, survey honeybee health and educate beekeepers about best management practices. These teams save beekeepers money, prevent losses and help to keep a finger on the pulse of bee health nationwide. You can learn more in this [case studies video](#).
- Seeds for Bees® Forage (SFB) puts blooming plants back on the agricultural landscape, helping bees get the nutrition they need to stay healthy, pollinate and make honey — all while improving soil health and water infiltration. Between 2013 and 2024, SFB provided cover crop seed and technical assistance for the planting of over 103,000 acres of cover crop in California farms and orchards. For more information, please view [The 2024 Seeds for Bees Impact Report](#).
- Ph.D. Scholarship Grants provide funds to scholars to support the future of honeybee research. The program recognizes and supports outstanding graduate students who are pursuing research-based doctoral degrees in fields within the PAm mission of enhancing honeybee health while improving crop production. More information about these scholars in the U.S. and Canada is summarized below and here: [PAm-Costco Scholars](#).



- [The Bee and Butterfly Habitat Fund](#) establishes high-quality pollinator habitat to ensure honeybee and monarch butterfly population health. The Midwest is a critical area where efforts are focused to support honey production, pollination and native pollinators. From 2017 to 2024, 5,000 acres have been planted, supporting an estimated 8,610 hives to produce 5.2 million pounds of U.S. honey. For more information, view [The 2024 Bee and Butterfly Habitat Fund Impact Report](#).



- Casa Apis is a cooperative of over 700 small-scale beekeepers in Northeast Brazil that is a source of Kirkland Signature Organic Raw Honey. Between 2020 and 2023, Costco provided a total \$100,000 grant to support efforts to plant drought-tolerant native trees in their community. Through Casa Apis’s efforts, survival and productivity have increased compared to regional averages in reforested areas. Costco continued to support these efforts and supplied Casa Apis with an additional \$47,000 grant in FY24. More information about the project with Casa Apis can be found here: [Casa Apis](#).
- Costco also offers an additional honey category: Local Raw Unfiltered Honey from various regions around the U.S.. More information can be found in the *Costco Connection* article, [Honeybee Health](#); in the [Merchandising section](#) (see “Nature & Biodiversity”); and at [ProjectApism.org](#).